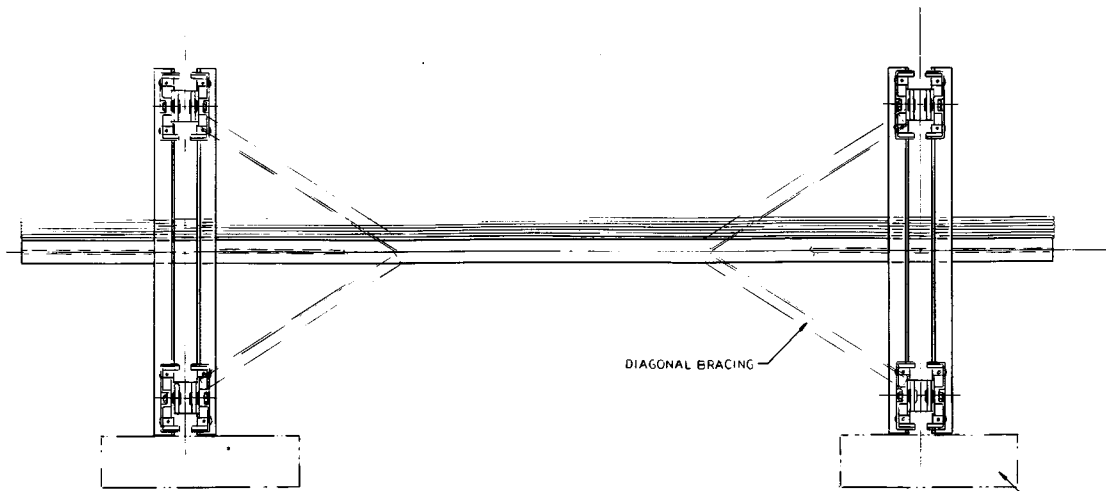




TEL: (517) 546-3220

MOTORIZED BRIDGE CRANES (AIR AND ELECTRIC)





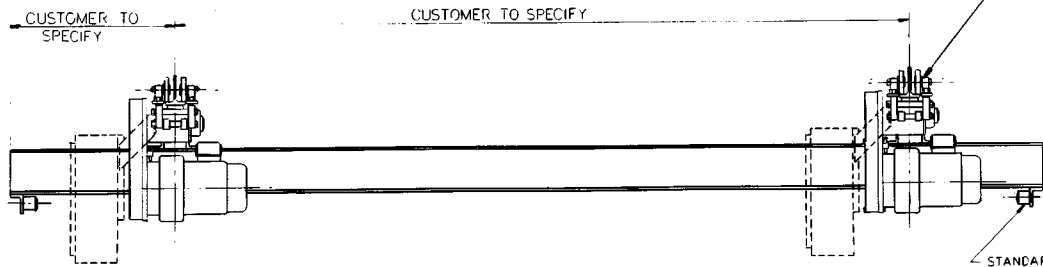
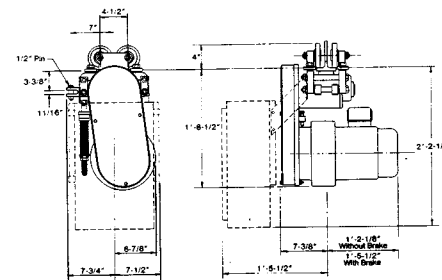
DIAGONAL BRACING

NO. 24-9 TRAMEAM TRACTOR DRIVE. (REFERENCE ONLY)

NO. 24-9 TRACTOR DRIVE

No. 24-9 tractor drives are powered by double reduction helical gearmotors with a roller chain final reduction between the gearmotor and drive wheel shaft. These drives have 6" diameter polyurethane drive wheels. Traction is obtained by the drive wheel bearing against the bottom of the track. Pressure is applied by a compression spring and is adjustable. These drives are available with 1/2, 3/4, 1 or 1-1/2 horsepower motors. Nominal speeds are 100, 125, 150, 175 and 200 FPM; slower speeds can be furnished.

Squirrel cage motors with SS-333 control systems are generally furnished on No. 24-9 drives. Multi-speed squirrel cage motors with 2-speed solid state control and wound rotor motors with variable speed control are also available. The drawing provides maximum clearance dimensions. The dotted lines indicate the SS-333 control panel location for single girder carriers. Consult factory for dimensions on panel locations for 2-speed and variable speed control.



CUSTOMER TO SPECIFY

CUSTOMER TO SPECIFY

STANDARD NEOPRENE END STOPS BOTH ENDS.

SIDE VIEW

UNIFIED MOTORIZED BRIDGE CRANE

ELECTRIC AND AIR OPERATED
 (SHOWN) (NOT SHOWN)

REFERENCE ONLY

ELECTRIC / AIR OPERATED
 (SHOWN) (NOT SHOWN)